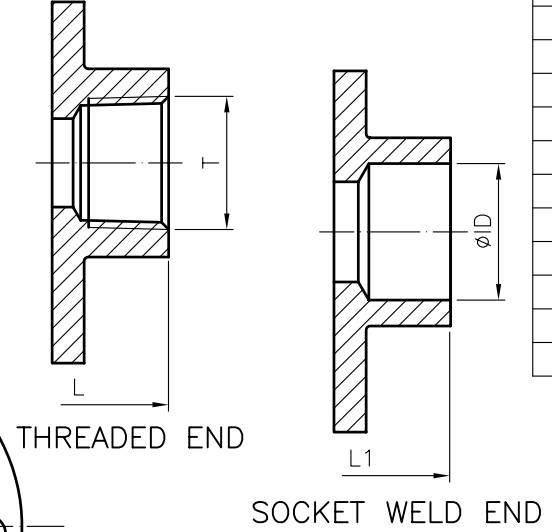


ITEM	DISCRIPTION	MATERIAL	Q'TY
1	Body	CF8M/LCB	1
2	End Cap	CF3M/CF8M/LCB	2
3	Ball	CF8M	1
4	Anti Static Stem	SS316	1
5	Ball Seat	DELRIN	2
6	Body Seal	PTFE.TEFLON	2
7	Thrust Washer	DELRIN	1
8A	O-Ring	VITON	1
8	Stem Packing	PTFE.TEFLON	1
9	Thrust Washer	50%SS.50%PTFE	1
10	Stem Nut	SS304	1
11	Lock Saddle	SS304	1
12	Handle	SS304	1
13	Stop Bolt	SS304	1
14	Stop Nut	SS304	1
15	Handle Bolt	SS304	1
16	Body Bolt	SS304	6
17	Bolt Nut	SS304	6
18	Handle Sleeve	VINYL	1



SIZE	ØOD	ØID	T	L	L1	C	H
3/4' RP	12.7	27.4	NPT	79	79	126	72
1' RP	17.5	34.1	PT	88	88	126	75
1-1/4' RP	22.1	42.9		103	103	156	85
1-1/2' RP	29.0	49.0	PF	111	111	156	89
2' RP	34.7	61.5	2999	128	128	181	115

REV	DATE	DESCRIPTION	CODE	REVISER	REMARKS	MATERIAL	APPROVE	CHECK	SCALE	UNIT	mm	Q'TY	TITLE	DRAWN BY	DATE
						3/4"RP~2"RP Class 1500			FREE				3-PC THREAD END BALL VALVE	lawrence	2008.08.22
									AF-37-3E0000-2A						
									AF-37-3E0000-2A						